

IEEE 802.11b/g/n

WLAN Client Adapter

QUICK START GUIDE

Version 1.1



Tested To Comply
With FCC Standards
FOR HOME OR OFFICE USE

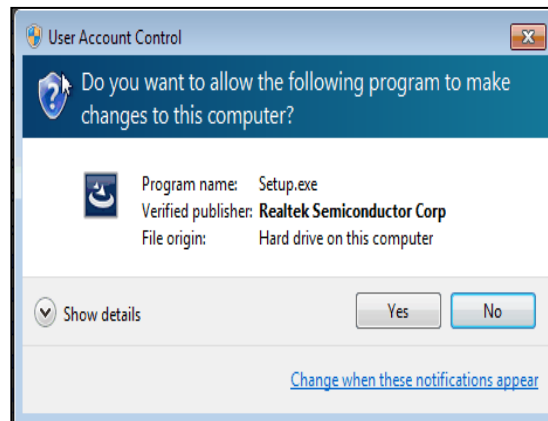
1. BOX CONTENTS

- ◆ Wireless LAN Adapter
- ◆ Quick Start Guide
- ◆ Driver CD

2. INSTALL DRIVER/UTILITY

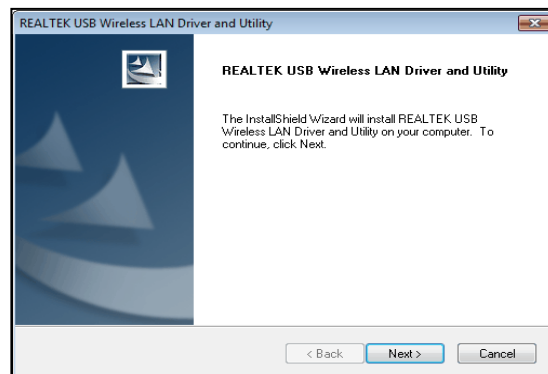
Step 1 : (Win7/8/8.1/10 only)

Insert the installation CD into your CD-ROM. UAC Dialog is shown. Click **Yes** to continue.



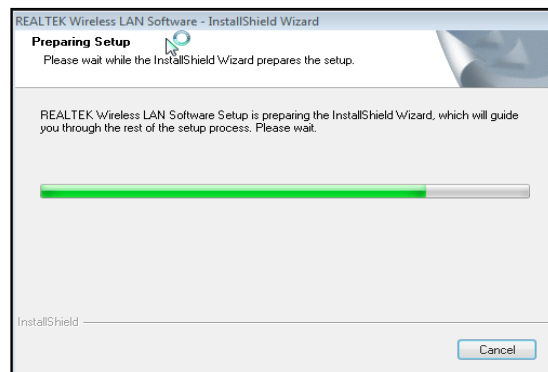
Step 2 :

Wizard is ready to install driver and utility. Click **Next** to begin the installation

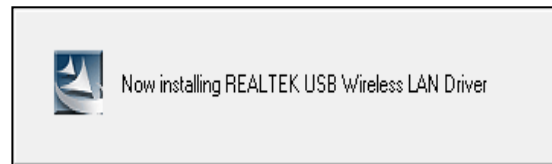


Step 3 :

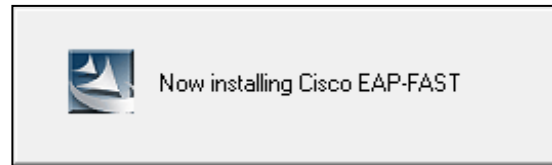
Preparing Setup dialog is shown



Installing & configuring WLAN driver and utility



Installing Cisco 802.1x module



Step 4 :

Click **Finish** to complete installation. The installation will affect after windows rebooting

