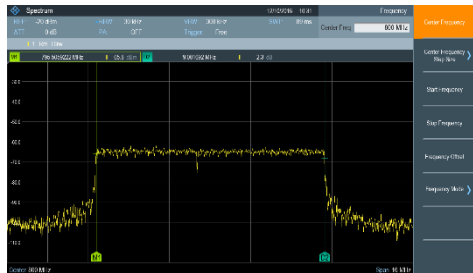


R&S®FPC1000

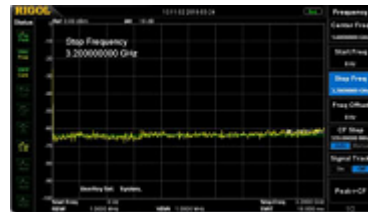
versus Rigol DSA832E

The R&S®FPC1000 is superior to the Rigol DSA832E series in major RF parameters and other hardware features at a comparable price

The R&S®FPC1000 offers far superior RF performance, engineered in Germany: DANL, phase noise, TOI, RBW range are better than on the Rigol DSA832E. It also offers a much better display, Wi-Fi remote control capability and a unique, flexible frequency upgrade concept. These key USPs make the R&S®FPC1000 simply outstanding compared to the Rigol DSA832E.



R&S®FPC1000, 10.1" display with 1366 x 768 pixel resolution.



Rigol DSA832E, 8" display with 800 x 480 pixel resolution.

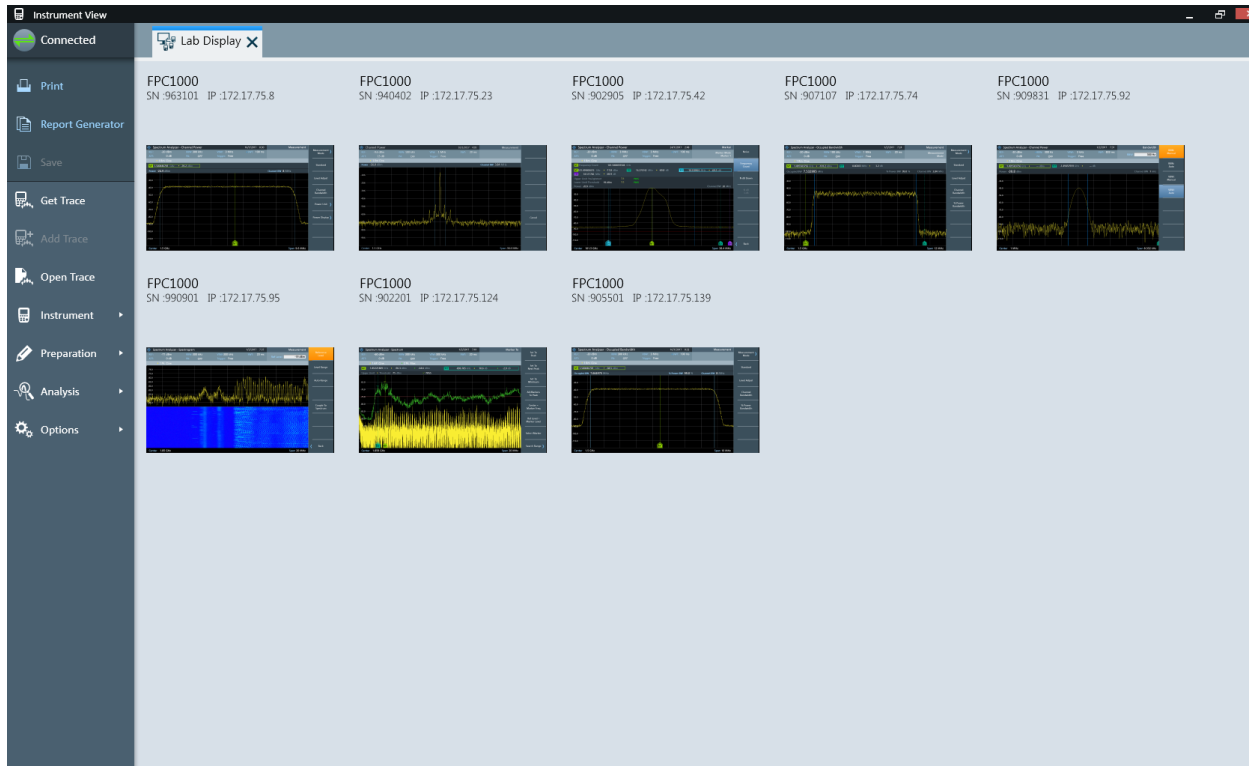


Parameter	R&S®FPC1000	Rigol DSA832E
Frequency range	5 kHz to 1/2/3 GHz	9 kHz to 3.2 GHz
DANL (norm. to 1 Hz)		
1 GHz, PA off	< -146 dBm (typ.)	< -140 dBm (typ.)
1 GHz, PA on	< -165 dBm (typ.)	< -158 dBm (typ.)
SSB phase noise at 500 MHz		
10 kHz offset	< -85dBc/Hz (typ.)	< -90 dBc/Hz at 1 GHz (typ.)
30 kHz offset	< -92 dBc/Hz (typ.)	-
100 kHz offset	< -103 dBc/Hz (typ.)	< -100 dBc/Hz at 1 GHz (typ.)
1 MHz offset	< -125 dBc/Hz (typ.)	-
RBW range	1 Hz to 3 MHz	10 Hz to 1 MHz
TOI at 1 GHz (att.: 10dB)	+17 dBm (meas.)	+7 dBm
Display	10.1" (1366 x 768)	8" (800 x 480)
Wi-Fi connection	yes	no
Max. input power	+30 dBm (1 W)	+20 dBm (100 mW)
Power consumption	16 W	35 W typ. (max. 50 W)
Remote control interfaces	Ethernet, USB, Wi-Fi	Ethernet, USB, GPIB
Other interfaces	audio, trigger/ref in/out	audio, ref in/out, ext. trigger in
Weight	3 kg	4.55 kg

Your benefit	Features
Price/performance ratio	The R&S®FPC1000 provides an extremely low noise floor with high max. input resulting in widest dynamic range in its class; RIGOL provides inferior RF performance at a similar price point
Unique upgrade path	Only buy the frequency you need thanks to keycode upgradeability; RIGOL devices require an additional instrument purchase
One step further	The R&S®FPC1000 features a Wi-Fi module – unique on the market – and offers the ability to control the FPC1000 remotely

► For more information, visit <https://www.rohde-schwarz.com/product/FPC>

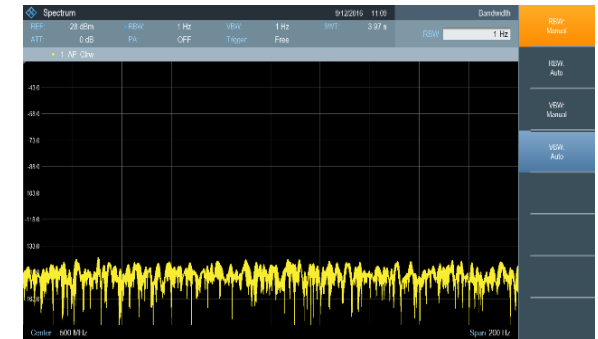
Wireless laboratory/classroom display – easily monitor and assist students ¹⁾



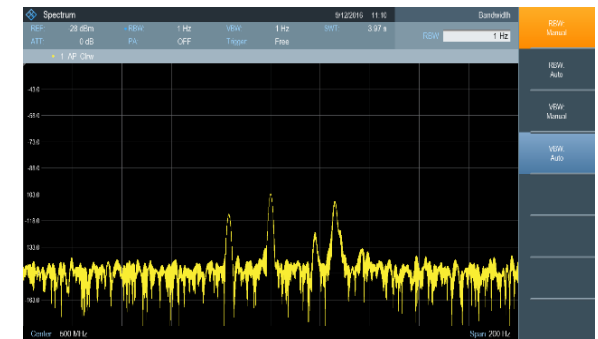
Virtual classroom concept.
Flexible deployment of classrooms anywhere, anytime.

¹⁾ Wi-Fi feature not available in some countries due to local certification requirements.

High sensitivity and resolution



R&S®FPC1000: < -165 dBm/Hz with R&S®FPC-B22 preamplifier.



R&S®FPC1000: better signal detection due to 1 Hz resolution bandwidth setting.