

Setting up a print job using Objet Studio

1. Select the embedded computer (inside the printer).

Embedded computer on
AGASSI and SAMPRAS

Embedded computer on RAFTER



Notice: The embedded computer runs Windows XP.

2. Start Objet.exe (if it is not already running).

The program looks like this:



3. Select the host computer.



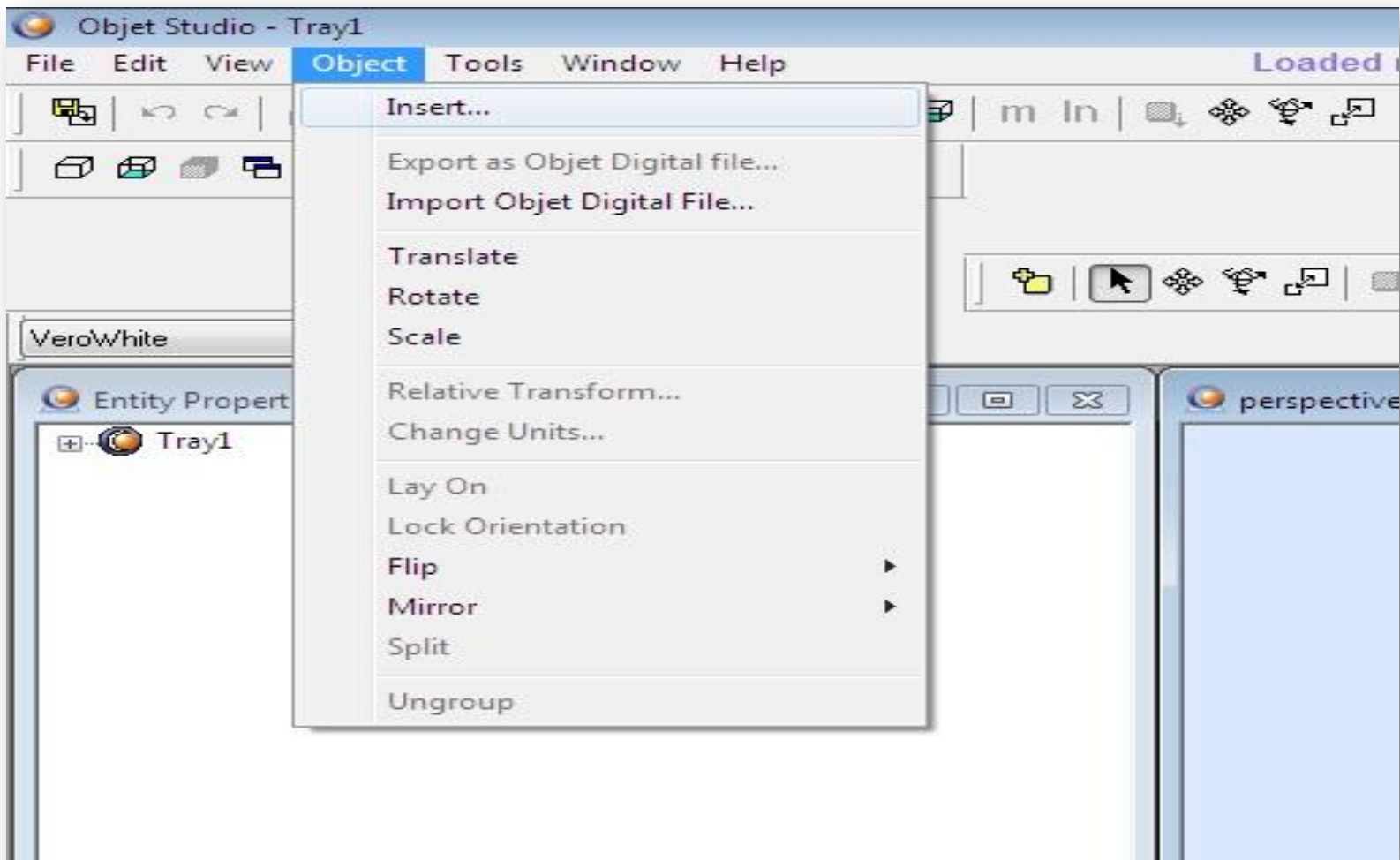
Notice: The host computer runs Windows 7.

4. Copy your STL file to the host computer.

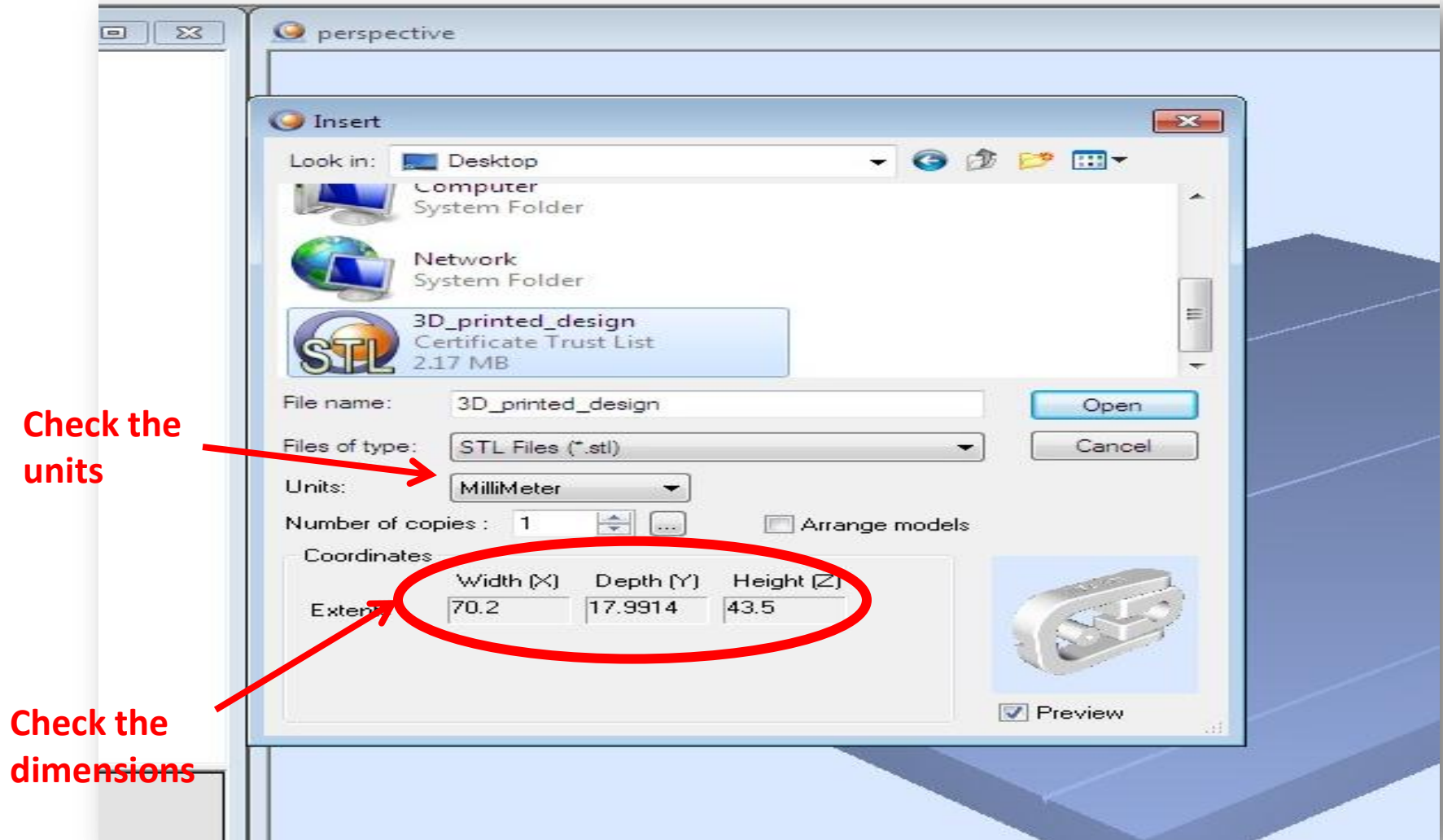
5. Start Objet Studio.



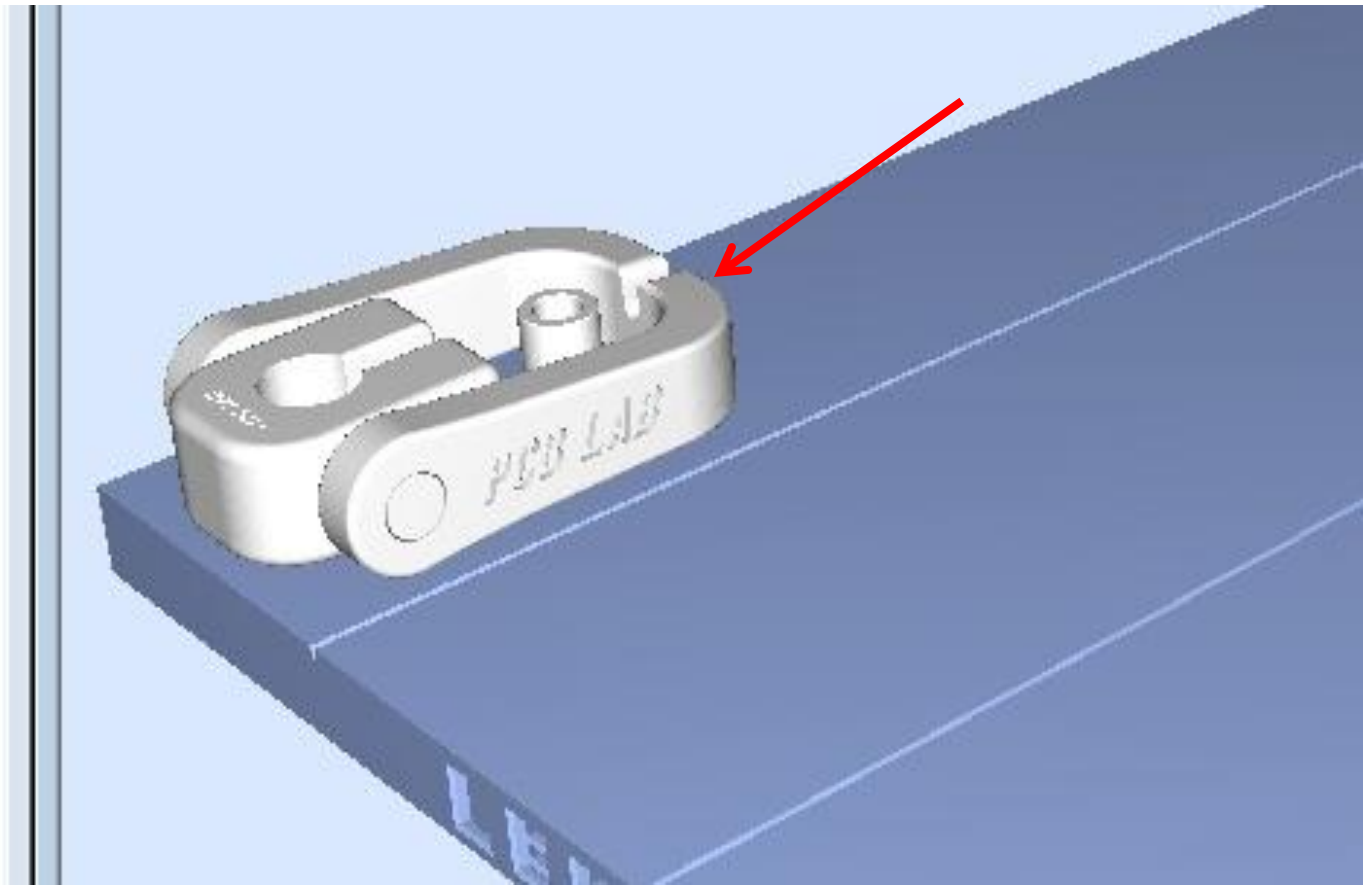
6. Press **Objet** -> **Insert** to import your STL files.



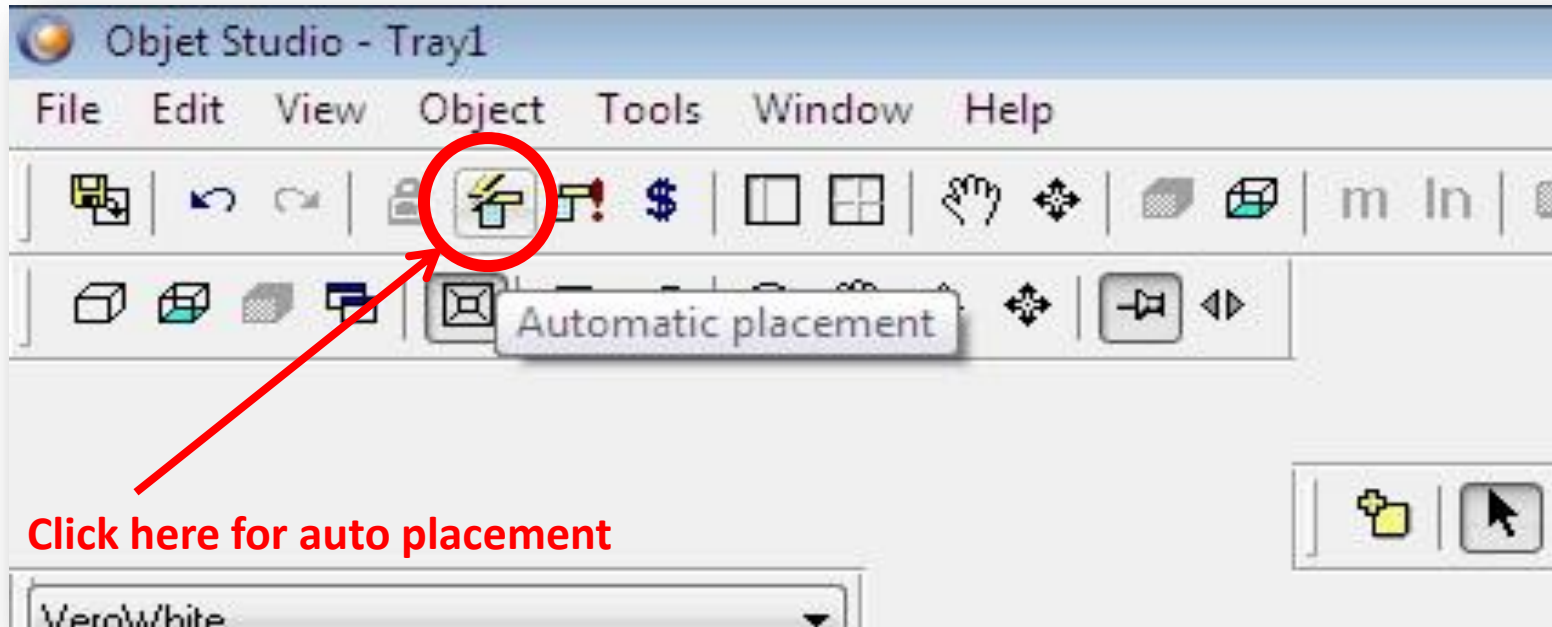
7. Make sure the overall dimensions are correct.



8. Your part will show up, make sure it looks right.



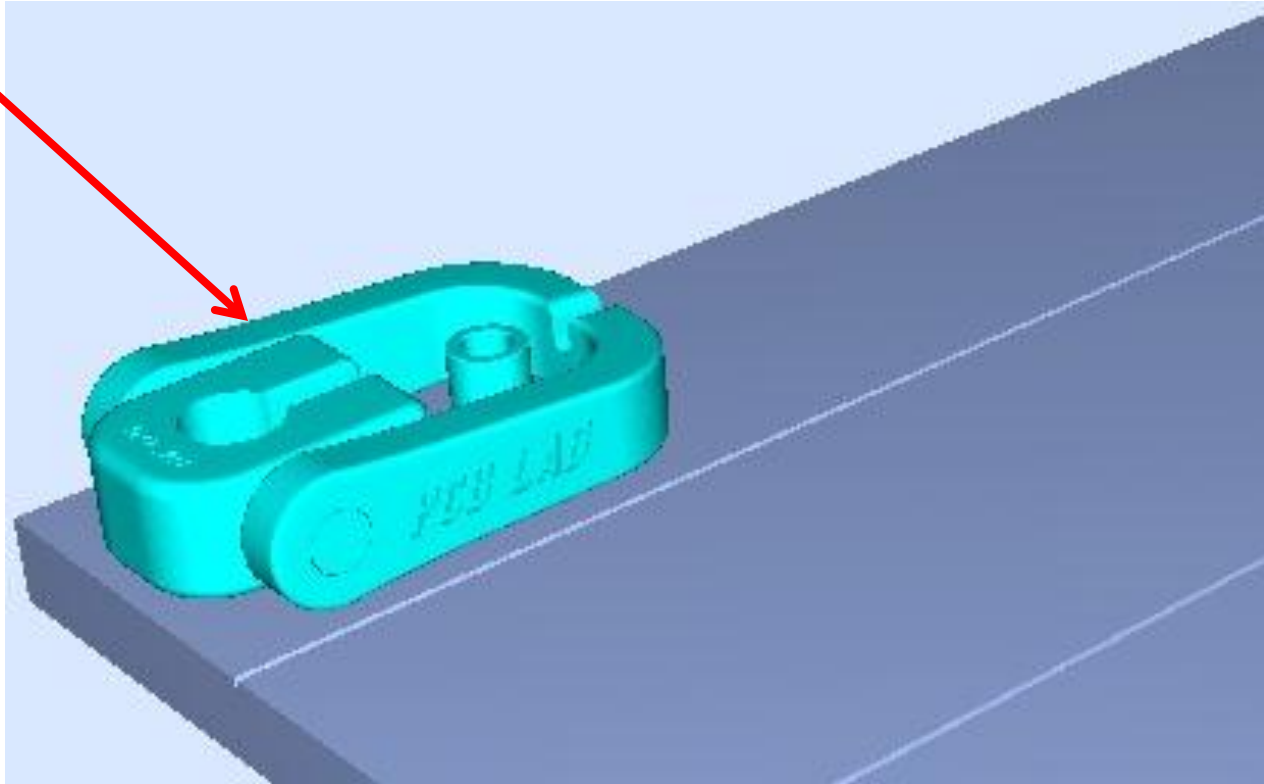
9. Run the automatic placement function.



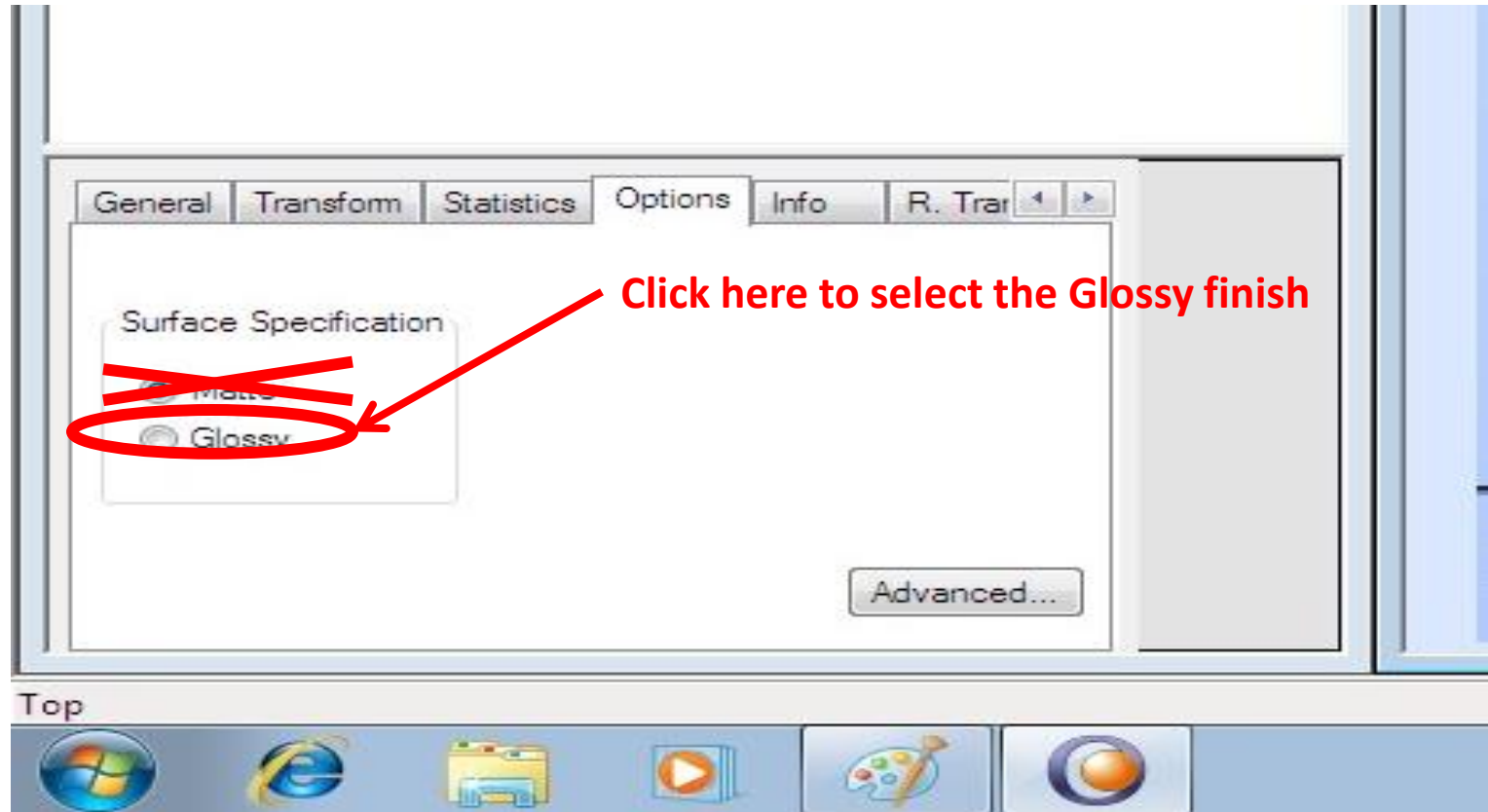
Note: you may be able to save material by manually adjusting the position but only do this if you know what you are doing.

10. Select all the parts on the tray.

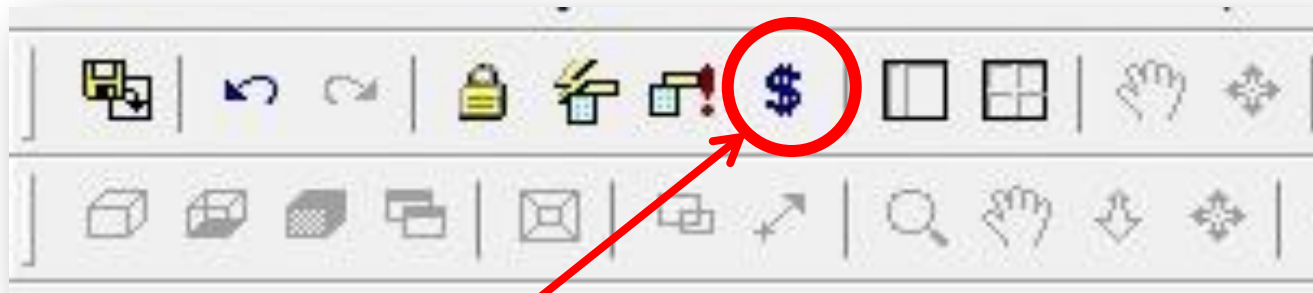
Selected parts turn blue



11. Select “Glossy” (lower left corner of screen).

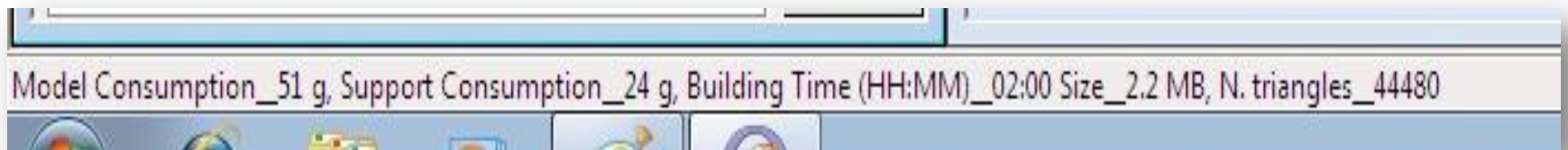


11. Click the dollar sign to get production estimates.



Click here for production estimates

The estimates will appear on the status bar:



12. Click Tray Validation (to see if your tray can be printed).



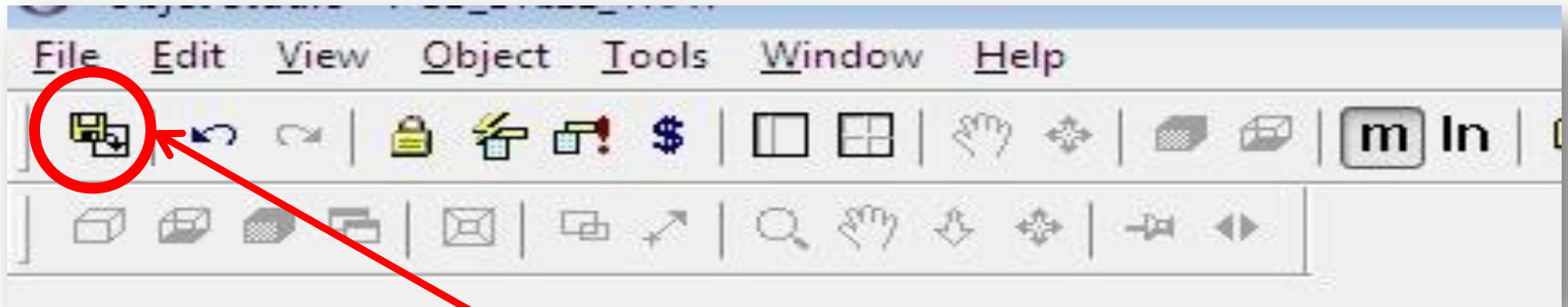
Click here for tray validation

If problem is detected, an error message will show up.

13. Save your tray in OBJTF format:

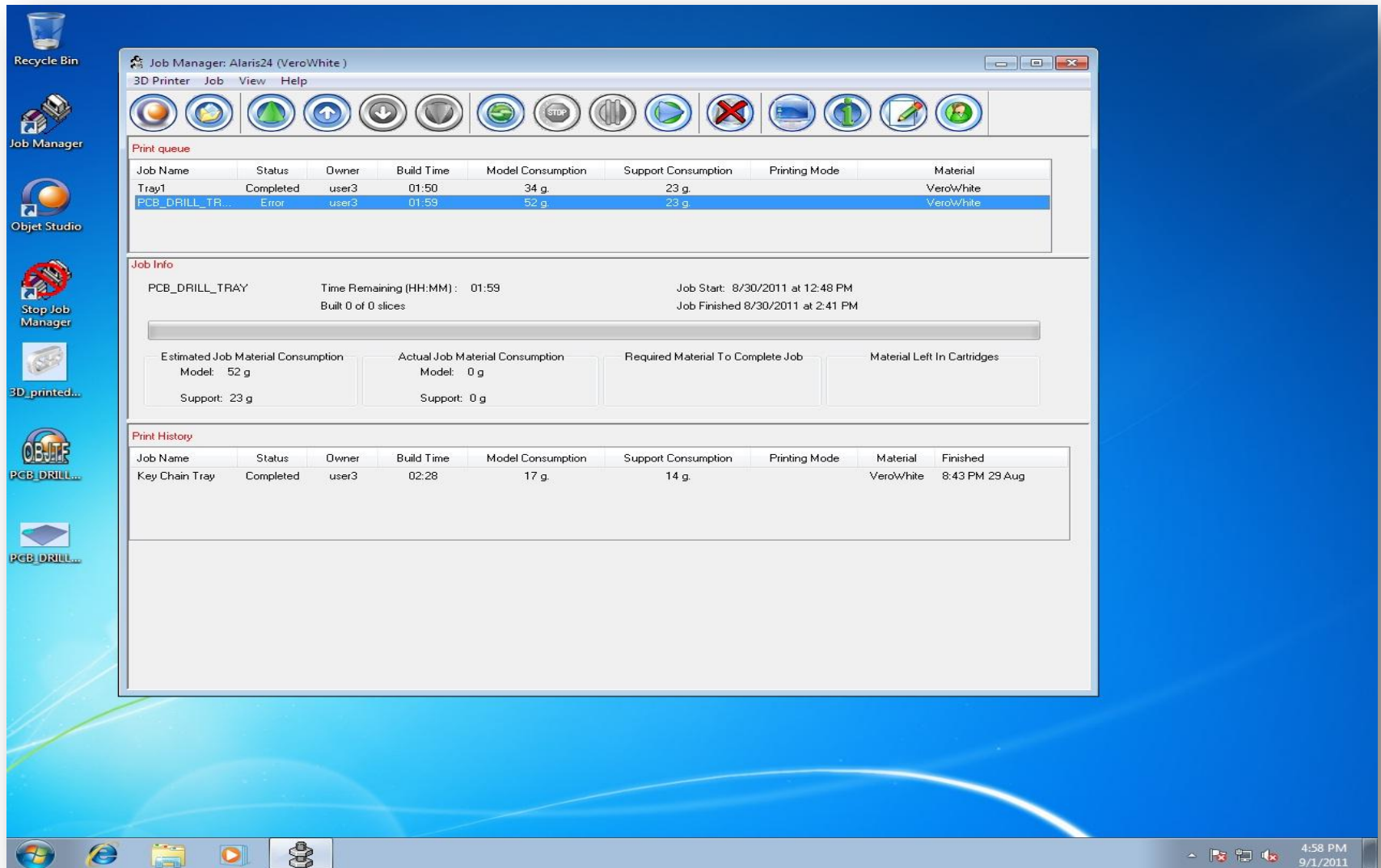
From the File menu, select Save Tray or Save Tray As.

14. Click Build Tray to start printing.



Build Tray

15. Objet Studio closes and the Job Manager opens, with your tray automatically loaded.



16. Select the embedded computer (inside the printer).

Embedded computer on
AGASSI and SAMPRAS

Embedded computer on RAFTER



Notice: The embedded computer runs Windows XP.

17. Click the red button to start printing.

Click here
to start
printing

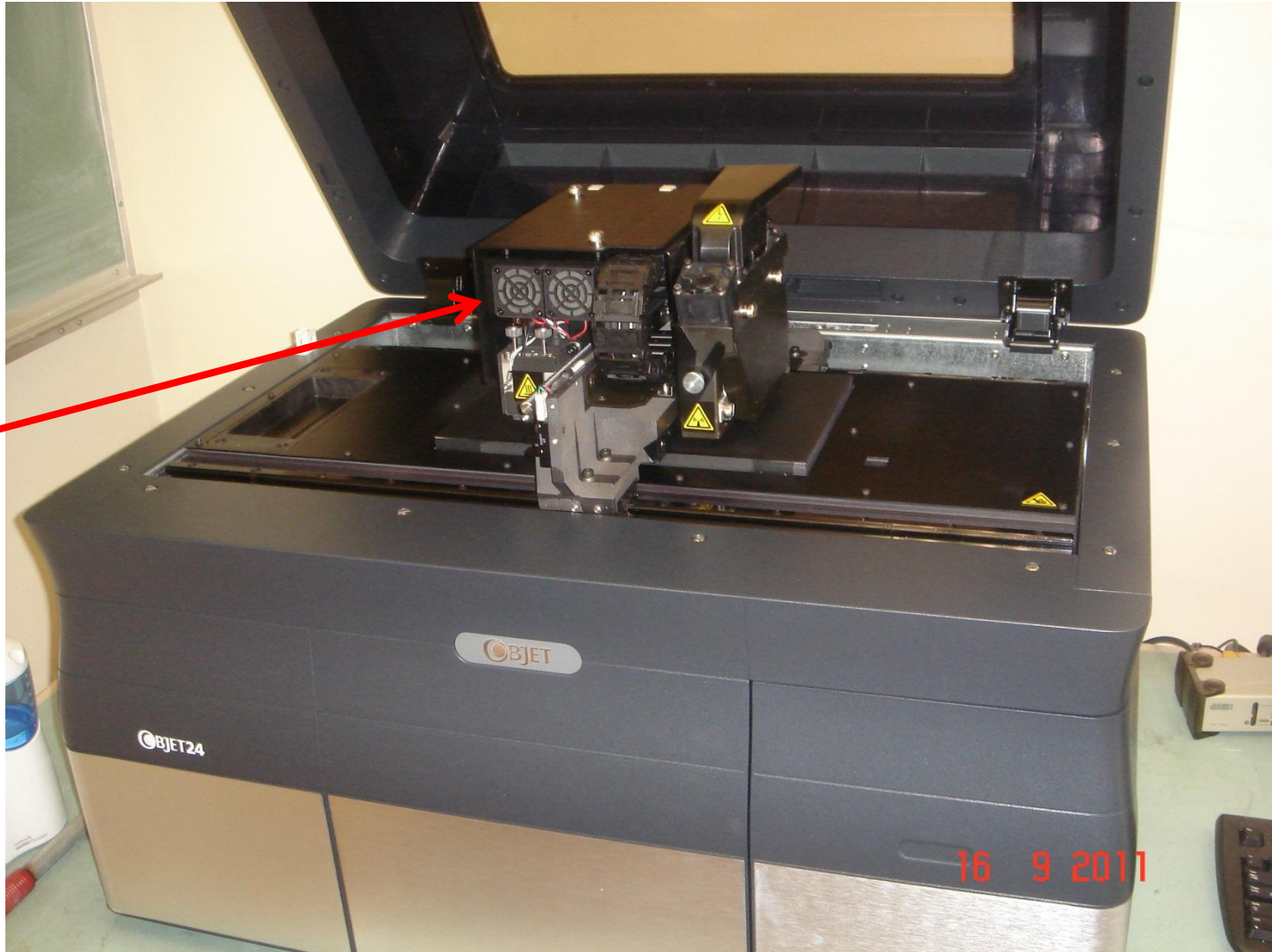


18. Take your parts, and clean the tray.



**Spray
water and
clean with
cloth**

19. Push the print head to the center.



**Push the
print head
by hand**

20. Delete your files from the host computer.

21. Weigh your parts before cleaning.



22. Record your name, the weight and the date in the Printer Usage Log.



23. Write the first letter of the name of the printer that you used in the calendar.

