

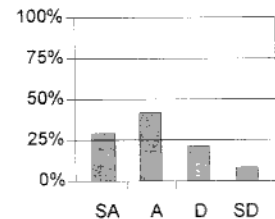
Instructor: Casas, Ed
 Course: ELEX 4340
 Set: 31559
 Surveys: 9

Student Survey Summary REPORT TO THE INSTRUCTOR

Term: 201430
 Survey Date: Dec-17-14
 Report Date: Jan-14-15 15:19
 School: Energy

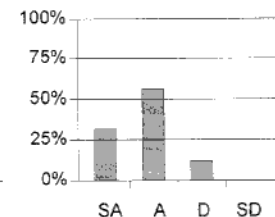
Communication Skills

	Strongly Agree (4)	Agree (3)	Disagree (2)	Strongly Disagree (1)	N-O	n	Mean	Median
2 Pace of delivery appropriate	38%	13%	38%	13%		8	2.8	2.5
6 Expressed ideas clearly	25%	38%	25%	13%		8	2.8	3.0
24 Voice used effectively	25%	75%				8	3.3	3.0
Cluster average	29%	42%	21%	8%			2.9	3.0



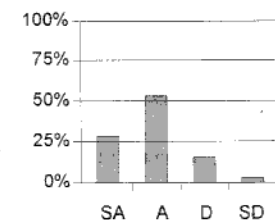
Instructional Organization

	Strongly Agree (4)	Agree (3)	Disagree (2)	Strongly Disagree (1)	N-O	n	Mean	Median
4 Followed course outline	38%	63%				8	3.4	3.0
7 Presentation well organized	25%	50%	25%			8	3.0	3.0
10 Prepared for class	38%	63%				8	3.4	3.0
17 Required textbook useful		100%			88%	8	3.0	
19 Course requirement clear	25%	38%	38%			8	2.9	3.0
25 Handouts useful	38%	63%				8	3.4	3.0
Cluster average	32%	56%	12%		15%		3.2	3.0



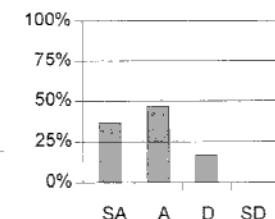
Evaluation & Assessment

	Strongly Agree (4)	Agree (3)	Disagree (2)	Strongly Disagree (1)	N-O	n	Mean	Median
5 Exams tested material taught	50%	50%				8	3.5	3.5
9 Opportunities to evaluate learning	25%	63%	13%			8	3.1	3.0
11 Assignments & exams fair	25%	38%	25%	13%		8	2.8	3.0
15 Assignments helped me learn	13%	63%	25%			8	2.9	3.0
Cluster average	28%	53%	16%	3%			3.1	3.0



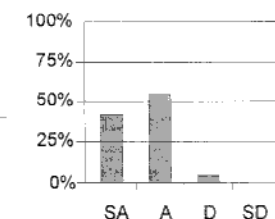
Timeliness

	Strongly Agree (4)	Agree (3)	Disagree (2)	Strongly Disagree (1)	N-O	n	Mean	Median
14 Available outside of class time	50%	50%			25%	8	3.5	3.5
21 Used class time effectively	13%	63%	25%			8	2.9	3.0
26 Began classes on time	38%	63%				8	3.4	3.0
28 Tests & assignments assessed in time	50%	13%	38%			8	3.1	3.5
Cluster average	37%	47%	17%		6%		3.2	3.0



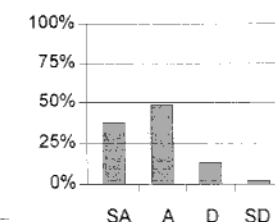
Interpersonal Skills

	Strongly Agree (4)	Agree (3)	Disagree (2)	Strongly Disagree (1)	N-O	n	Mean	Median
3 Responded to questions & comments	50%	38%	13%			8	3.4	3.5
8 Receptive to student views	38%	63%				8	3.4	3.0
16 Enthusiastic when presenting material	38%	63%				8	3.4	3.0
Cluster average	42%	54%	4%				3.4	3.0



Instructional Skills

	Strongly Agree (4)	Agree (3)	Disagree (2)	Strongly Disagree (1)	N-O	n	Mean	Median
1 Explained course contents applications	38%	38%	25%			8	3.1	3.0
12 Handwriting was clear	29%	57%	14%		13%	8	3.1	3.0
13 Teaching methods effective		63%	25%	13%		8	2.5	3.0
18 Used instructional media effectively	43%	57%			13%	8	3.4	3.0
20 Emphasized important material	25%	50%	25%			8	3.0	3.0
22 Was helpful when I needed assistance	50%	50%				8	3.5	3.5
23 Invited questions	63%	38%				8	3.6	4.0
27 Visual aids were clear	50%	38%	13%			8	3.4	3.5
Cluster average	37%	48%	13%	2%	3%		3.2	3.0



BCIT

This information to be used only as outlined in the FSA Collective Agreement. Caution when interpreting results with a response rate less than 30.



Student Opinion of Instructional Quality Survey

SECTION TWO: These comments are intended for your instructor.

What did you like best about the instructor's teaching?

What suggestions do you have to help improve the instructor's effectiveness?

Too fast. Feels like notes are missing principle concepts
sometimes.

Additional questions as supplied by the instructor:



Student Opinion of Instructional Quality Survey

SECTION TWO: These comments are intended for your instructor.

What did you like best about the instructor's teaching?

Ed is enthusiastic about the course

What suggestions do you have to help improve the instructor's effectiveness?

Please review your assignments with your lecture material.
The assignments needed to directly relate to what we
have done in lectures which at this point I don't they
do

Additional questions as supplied by the instructor:



Student Opinion of Instructional Quality Survey

SECTION TWO: These comments are intended for your instructor.

What did you like best about the instructor's teaching?

What suggestions do you have to help improve the instructor's effectiveness?

Instructor confused himself while teaching on a regular basis. Course content was often not relevant.

Additional questions as supplied by the instructor:



Student Opinion of Instructional Quality Survey

SECTION TWO: These comments are intended for your instructor.

What did you like best about the instructor's teaching?

What suggestions do you have to help improve the instructor's effectiveness?

Course material is largely irrelevant to program, and much of it is for more technical than necessary. This should be a 3rd level course talking about UART, I2C, SMBUS, SPI, PCI-E.

Additional questions as supplied by the instructor:



Student Opinion of Instructional Quality Survey

SECTION TWO: These comments are intended for your instructor.

What did you like best about the instructor's teaching?

Ed is very knowledgeable about his course.

What suggestions do you have to help improve the instructor's effectiveness?

I think there should be less material so we can focus more on the other topics, thus, we can learn more about important topics.

Additional questions as supplied by the instructor:



Student Opinion of Instructional Quality Survey

SECTION TWO: These comments are intended for your instructor.

What did you like best about the instructor's teaching?

Very Helpful

understands student's heavy workload

What suggestions do you have to help improve the instructor's effectiveness?

focus on more important topics

i.e. ones that students will eventually apply once on field
less

Additional questions as supplied by the instructor: